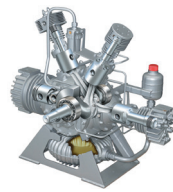


M-SERIES™ DUPLEX

CNG System For Medium To Large Fleets



FEATURES



COMPRESSOR

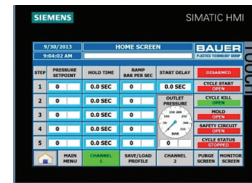
Featuring BAUER's latest state-of-the-art C23 series high inlet pressure capable, air-cooled compressor, at the heart of the system.

- › Designed for continuous duty application
- › Extremely durable and low maintenance
- › Negligible oil carryover in the PPM Range



COST OF OWNERSHIP

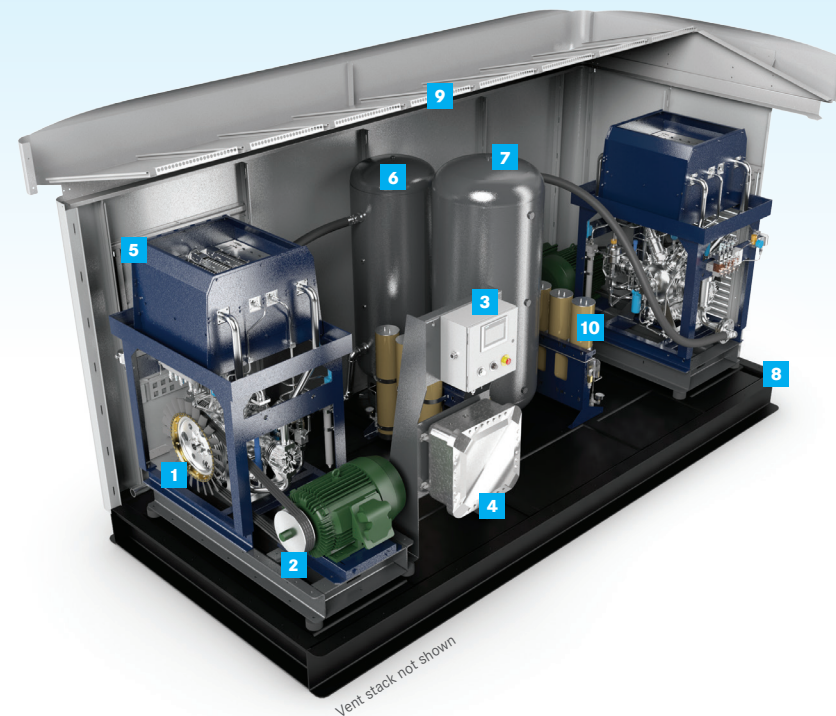
Designed for long periods between maintenance intervals and very low cost of ownership. 8000 hrs between ring changes. 30,000 hrs before major overhaul. Lifetime BAUER support.



CONTROL SYSTEM

State-of-the-art control system and intuitive machine interface makes operating the unit simple.

- › Excellent diagnostics
- › Remote interface via smartphone option
- › Online manual and operating / maintenance instructions standard



- 1 BAUER C23 AIR-COOLED COMPRESSOR (x2)
- 2 HIGH EFFICIENCY TEFC MOTOR (x2)
- 3 NEMA 4 CONTROL PANEL
- 4 NEMA 7 STARTER PANEL
- 5 COMPRESSOR HEAT EXCHANGER (x2)
- 6 INLET BUFFER TANK
- 7 VAPOR RECOVERY TANK
- 8 PRECISION FORMED AND WELDED STEEL SKID
- 9 INTERIOR LIGHTING AND INFRARED GAS DETECTOR
- 10 HIGH PRESSURE DRYER (x2) (OPTIONAL)

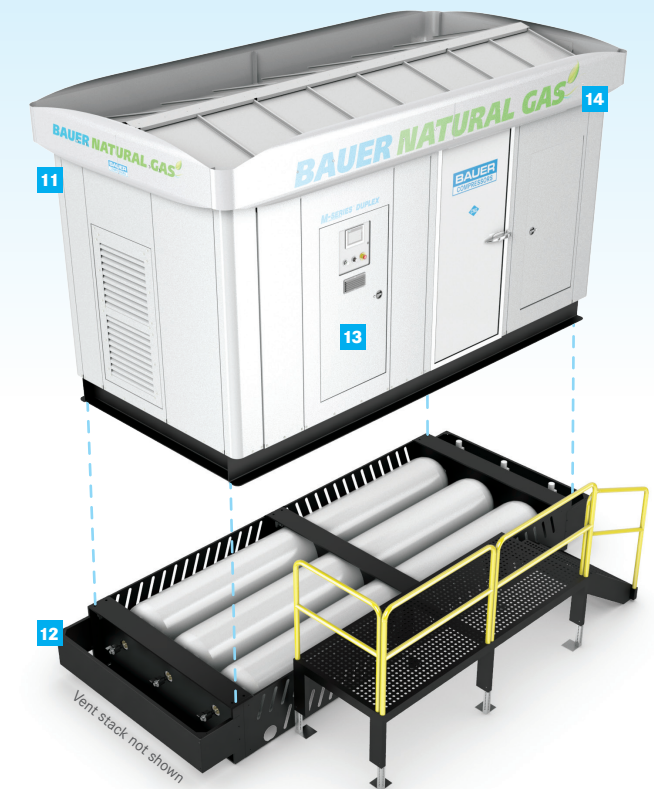
BENEFITS

- › A heavy-duty, high performance system from BAUER that can accommodate gas utility inlet pressures from 10-200 PSIG.
- › Standard, pre-engineered system with many customizable options.
- › Integrated CNG system, both easy and economical to install.
- › Attractive, state-of-the-art design suitable for placement within public view. Logo awning allows for customer branding.
- › Easy to maintain with low cost of ownership makes a BAUER compressor very economical to operate.
- › BAUER'S legendary performance, quality and reliability are guaranteed and backed by the best warranty in the industry.

- 11 WEATHERPROOF AND RUSTPROOF POWER-COATED GALVANNEAL ENCLOSURE (10 YEAR WARRANTY)
- 12 UNDER-SKID STORAGE (OPTIONAL)
- 13 HEAVY-DUTY INSULATED PERSONNEL DOOR
- 14 CUSTOMIZABLE LOGO AWNING

OPTIONAL FEATURES

- › High Pressure Drying
- › Priority Fill Panel
- › Cell Phone Modem with Remote Notification
- › Enclosure Space Heater
- › Interstage Pressure and Temperature Monitoring
- › **Integrated Storage Option:** Fully integrated under-skid high capacity 3-pack ASME storage with access platform and stairs



TECHNICAL DATA

Model	Inlet pressure		Final pressure		Capacity				Number of Stages	Running Speed	Motor			
	PSIG		BAR		CFM	M3/H	DGE/H	GGE/H			RPM	hp	kW	
	min	max	min	max										max
C23.2	10	15	0.7	1	5000	345	150	254	64	76	4	1425	50 (x2)	37 (x2)
C23.10	55	65	3.8	4.5	5000	345	180	306	78	90	4	1200	50 (x2)	37 (x2)
C23.12	115	145	8	10	5000	345	230	390	98	116	4	1200	50 (x2)	37 (x2)
C23.13	175	200	12	14	5000	345	250	424	108	126	4	1200	50 (x2)	37 (x2)

Note: All capacities are based on pipeline quality natural gas supplied at the maximum allowable inlet pressure to the compressor and 3600 psig discharge pressure. For all models lower inlet pressure is possible but with reduced capacity and possibly reduced discharge pressure. Motor power is reference to maximum allowable inlet pressure and 4500 psig discharge pressure. Consult BAUER for performance at other conditions. Performance tolerance +/- 5%.

SYSTEM FOOTPRINT

(STANDARD)

DIMENSIONS L X W X H inches (mm)

- › 192" x 90" x 113" (4877mm x 2286mm x 2870mm)

WEIGHT pounds (kg)

- › 17,000 lb. (7711 kg) maximum

Designed in compliance with NFPA 52 and NFPA 70 Article 500 Class 1, Division 2, Group D.

CUSTOMER SUPPORT

GLOBAL SUPPORT

SINGLE SOURCE RESPONSIBILITY

LOW COST OF OWNERSHIP

LIFECYCLE PERFORMANCE

FOR MORE INFORMATION PLEASE VISIT:
www.BauerCustomerSupport.com

